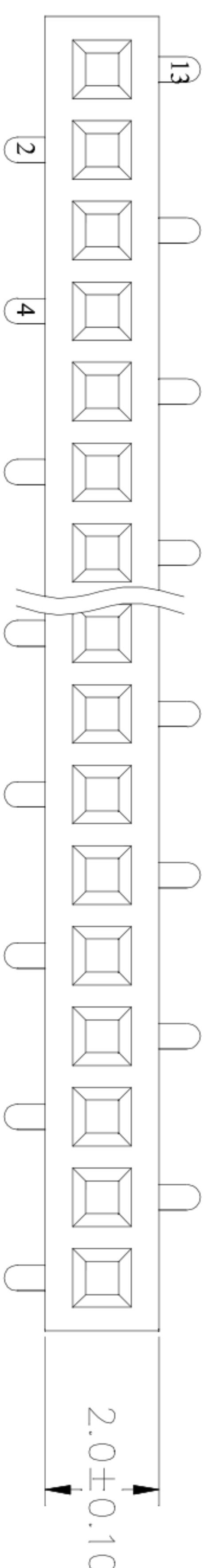


1.27mm (0.050") FEMALE HEADER, SINGLE ROW, SMT H=2.0mm

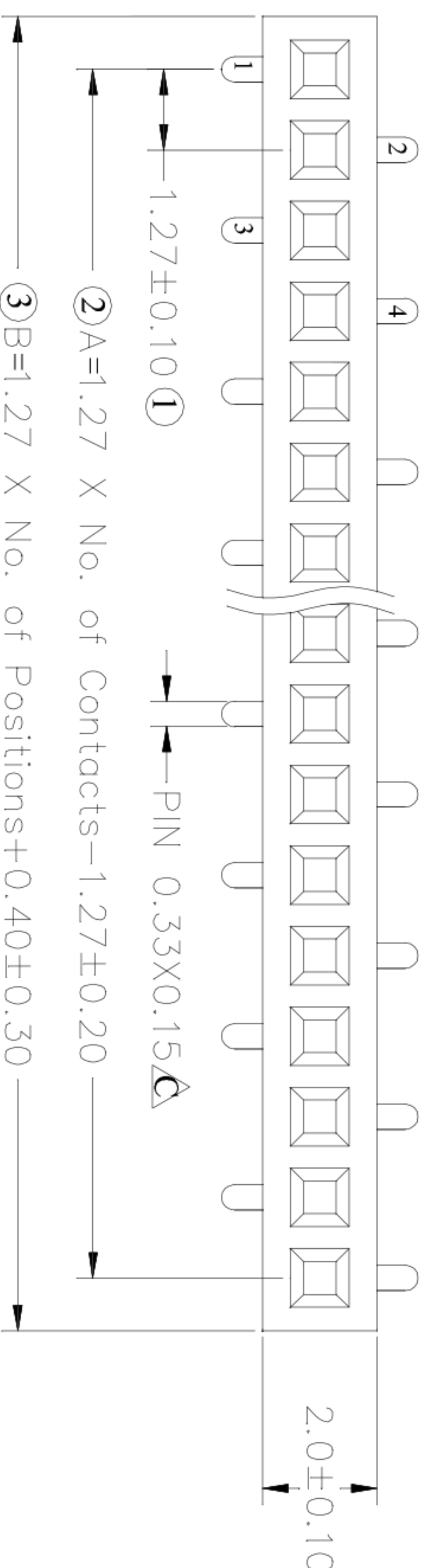
SPECIFICATIONS 规格

CURRENT RATING 电流额定值 : 1AMP
 CONTACT RESISTANCE 接触电阻值 : 20mΩ Max
 INSULATION RESISTANCE 绝缘电阻值 : 1000MΩ Min
 DIELECTRIC WITHSTAND 耐压值 : 500V AC/minute
 OPERATION TEMPERATURE 工作温度 : -40°C to +105°C

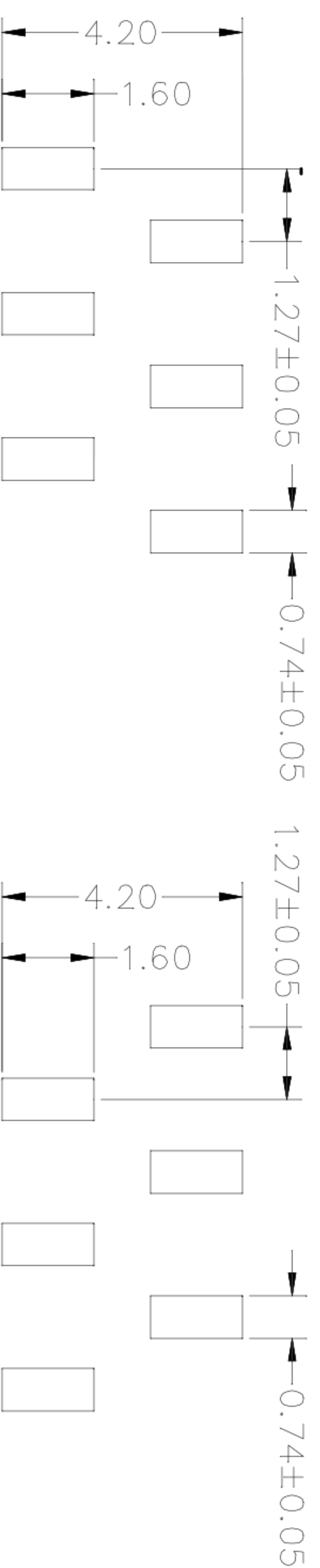
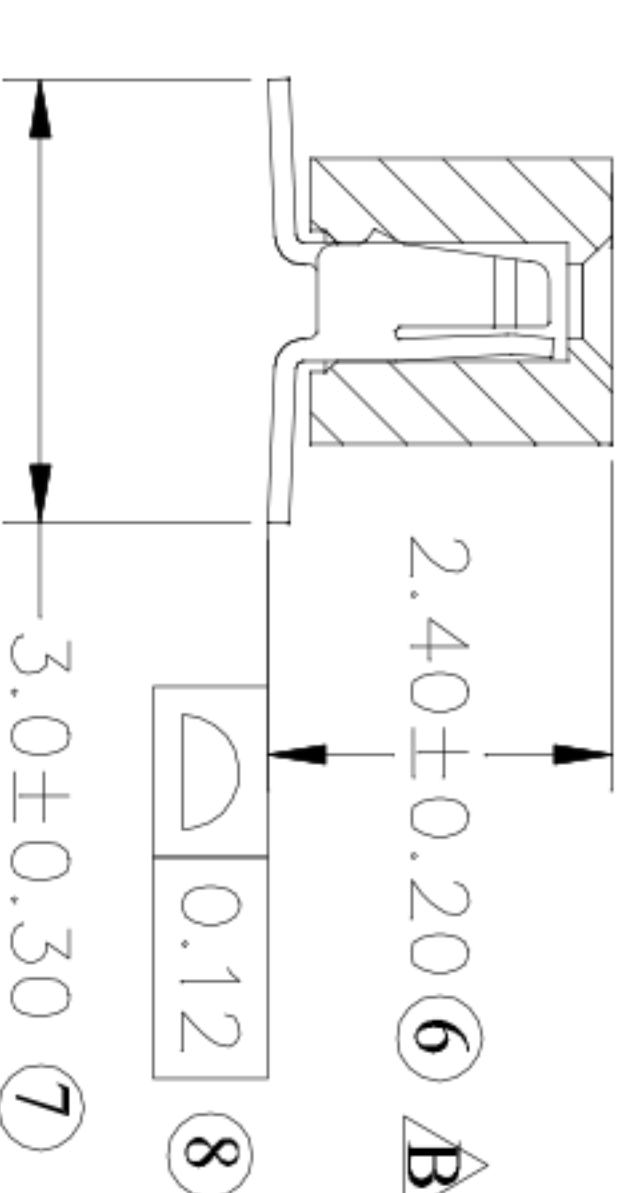
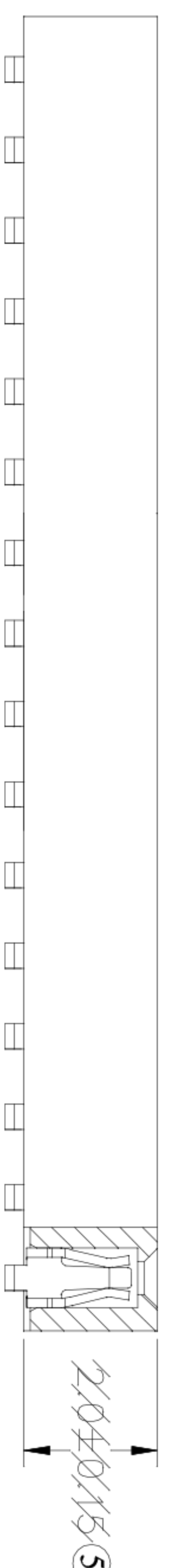
CONTACT MATERIAL 端子材质 : Phosphor Bronze
 HOUSING MATERIAL 塑胶材质 :
 STANDARD 标准物料 : PA6T + 30%G.F. ; UL 94V-0;BLACK
 OPTIONS 可选物料 : LCP + 30%G.F. ; UL 94V-0;BLACK
 PA9T + 30%G.F. ; UL 94V-0;BLACK
 PLATING 电镀 : Au or Sn Over 30u" Ni



B Type



A Type



A Type

B Type

Recommended PCB Layout

No. of PIN/ROW	Dimension Information	
	A	B
02	1.27	2.94
03	2.54	4.21
04	3.81	5.48
05	5.08	6.75
06	6.35	8.02
07	7.62	9.29
08	8.89	10.56
09	10.16	11.83
10	11.43	13.10
11	12.70	14.37
12	13.97	15.64
13	15.24	16.91
14	16.51	18.18
15	17.78	19.45
16	19.05	20.72
17	20.32	21.99
18	21.59	23.26
19	22.86	24.53
20	24.13	25.80
21	25.40	27.07
22	26.67	28.34
23	27.94	29.61
24	29.21	30.88
25	30.48	32.15
26	31.75	33.42
27	33.02	34.69
28	34.29	35.96
29	35.56	37.23
30	36.83	38.50
31	38.10	39.77
32	39.37	41.04
33	40.64	42.31
34	41.91	43.58
35	43.18	44.85
36	44.45	46.12
37	45.72	47.39
38	46.99	48.66
39	48.26	49.93
40	49.53	51.20
41	50.80	52.47
42	52.07	53.74
43	53.34	55.01
44	54.61	56.28
45	55.88	57.55
46	57.15	58.82
47	58.42	60.09
48	59.69	61.36
49	60.96	62.63
50	62.23	63.90

APPROVALS		DATE		TITLE:		
DRAWN	ZHIWEI.CHEN	2015.07.07		1.27mm Crimp Style Connector		
CHECKED				PART NO. GP25-1271WVS-NP		
APPROVALS				SCALE: 1:1		
TOLERANCES ARE		30~以上 ±0.30	±0.30	ANGLE	UNIT: mm	
		10~30 ±0.20	±0.20	±2°	DRAWING NO.	
		5~10 ±0.15	±0.15			
		~ 5 ±0.10	±0.10			
ECN NO.	REV.	DATE.	DESCRIPTION.	CHANGE.	CHECK.	APPRO.
	A		NEW			



深圳市联丰电子有限公司
 SHENZHEN LIANFENG ELECTRONIC CO.,LTD