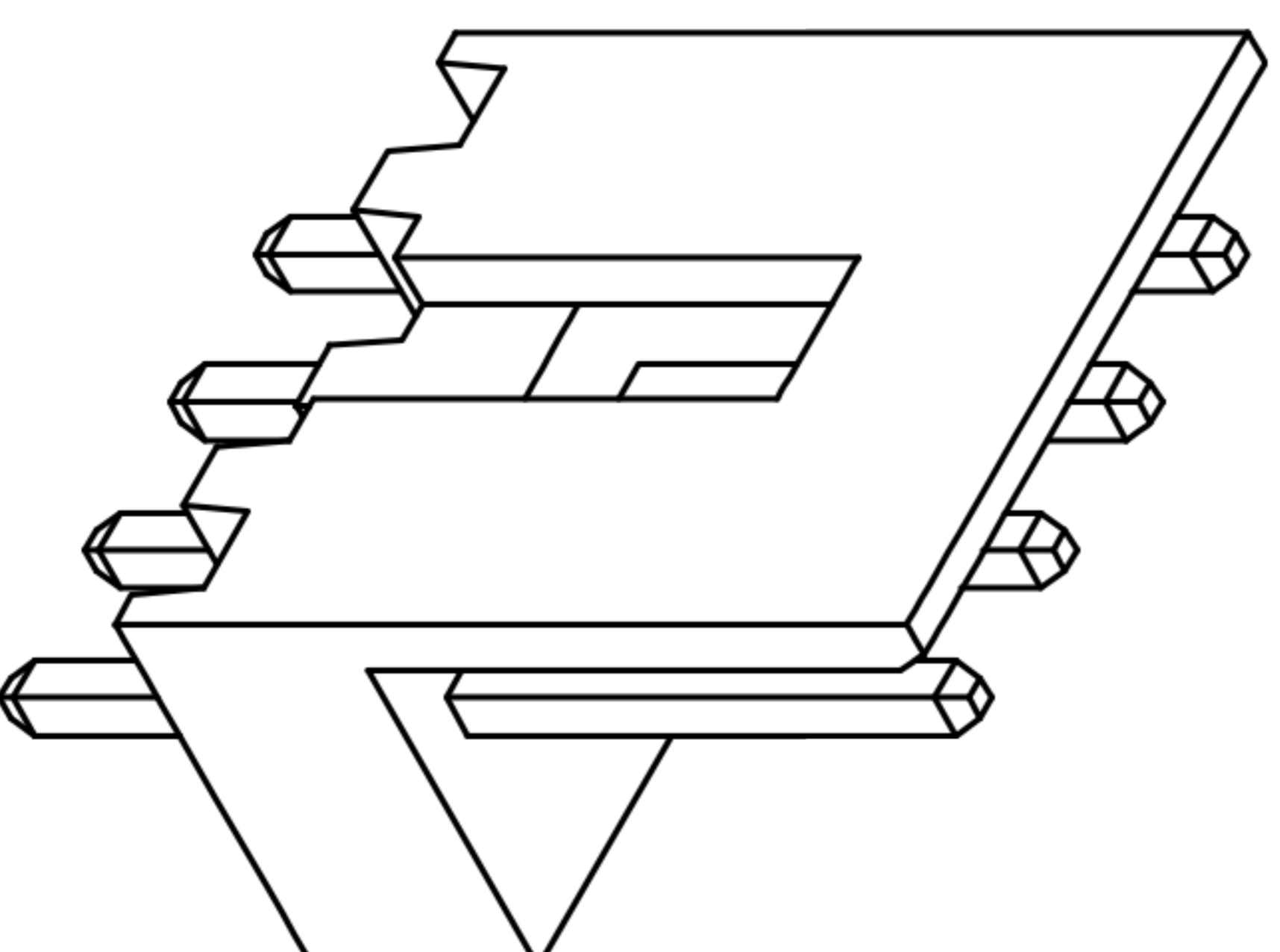
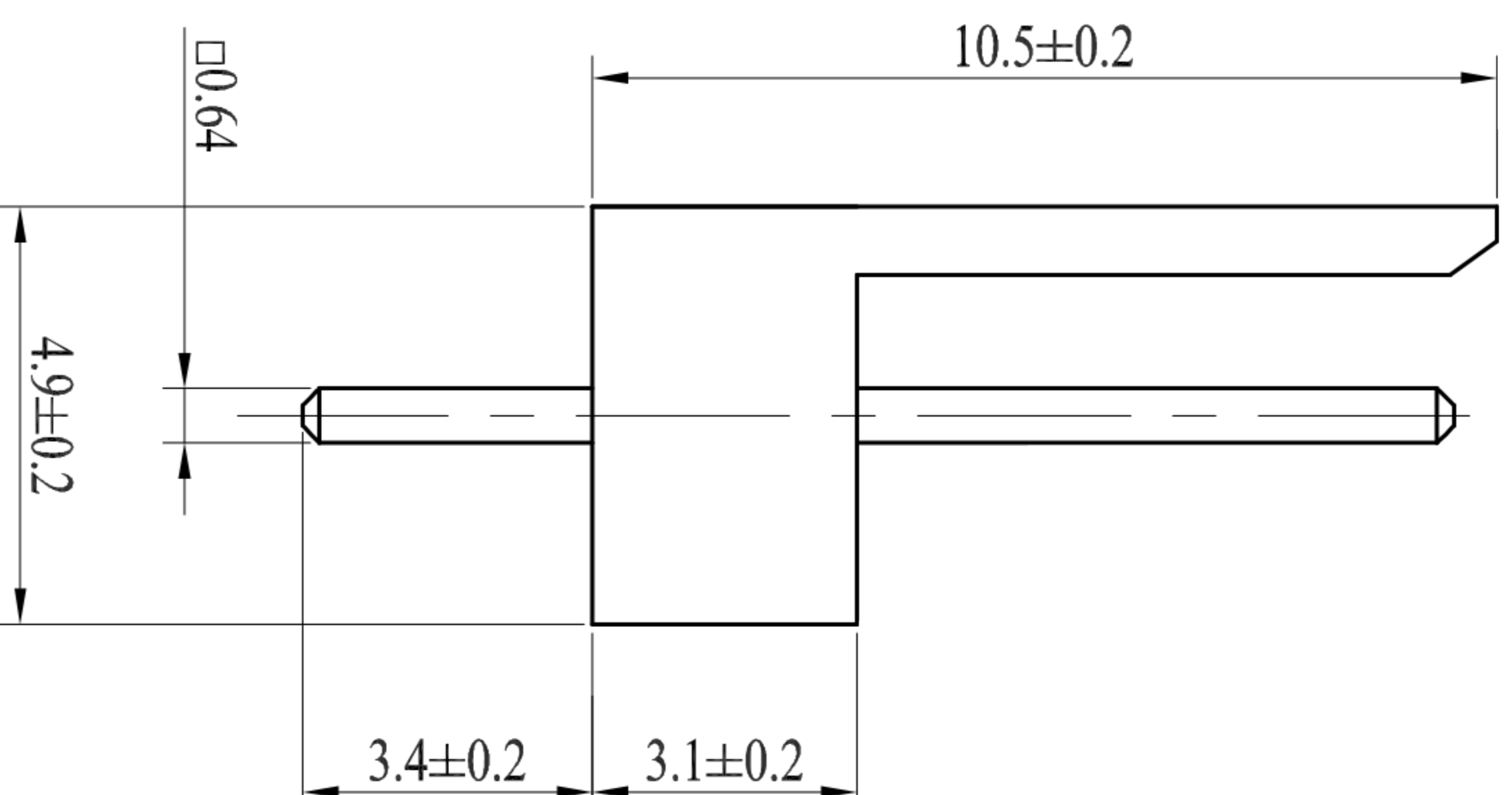
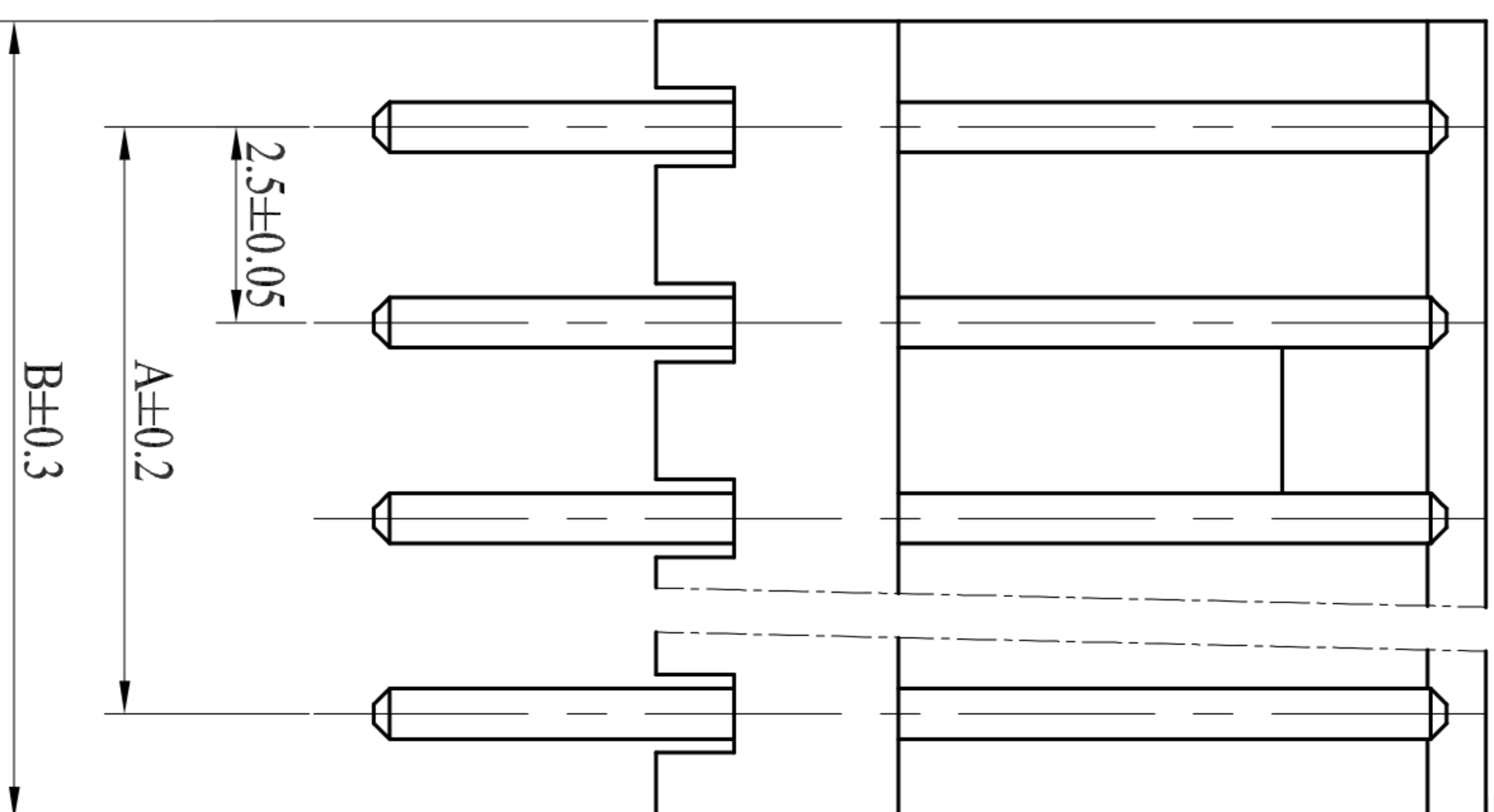


孔数	A	B
2	2.5	5.0
3	5.0	7.5
4	7.5	10.0
5	10.0	12.5
6	12.5	15.0
7	15.0	17.5
8	17.5	20.0
9	20.0	22.5
10	22.5	25.0
11	25.0	27.5
12	27.5	30.0





■ 技术参数 (SPECIFICATIONS)

- ◆ 额定电压: 250V AC DC
Voltage rating: 250V AC DC
- ◆ 额定电流: 3.0A AC DC MIN
Current rating: 3.0A AC DC MIN
- ◆ 耐压值: 1000V AC/minute
Withstand voltage: 1000V AC/minute
- ◆ 绝缘电阻: 1000MΩ MIN
Insulation resistance: 1000MΩ MIN
- ◆ 接触电阻: 20mΩ MAX
Contact resistance: 20mΩ MAX
- ◆ 工作温度: -25°C ~ +85°C
Working Temperature: -25°C ~ +85°C
- ◆ 间距: 2.5 mm
Pitch: 2.5 mm

■ 材料 (MATERIAL)

- ◆ 外壳: 尼龙66
Housing: PA66
- ◆ 插针: 黄铜
Pin: Brass

ECN NO.	REV.	DATE.	DESCRIPTION.
—	A	—	NEW
—	—	—	CHANGE.
—	—	—	CHECK.
—	—	—	APPRO.

APPROVALS		DATE	 深圳市联丰电子有限公司 SHENZHEN LINFENG ELECTRONIC CO.,LTD
DRAWN	ZHIWEI.CHEN	2015.07.07	
CHECKED			TITLE:
APPROVALS			PART NO.
TOLERANCES ARE			UNIT: mm
30~以上	±0.30	ANGLE	SCALE: 1:1
10~30	±0.20		PROJ: 
5~10	±0.15	±2'	DRAWING NO.
~ 5	±0.10		SHEET 1 OF 1