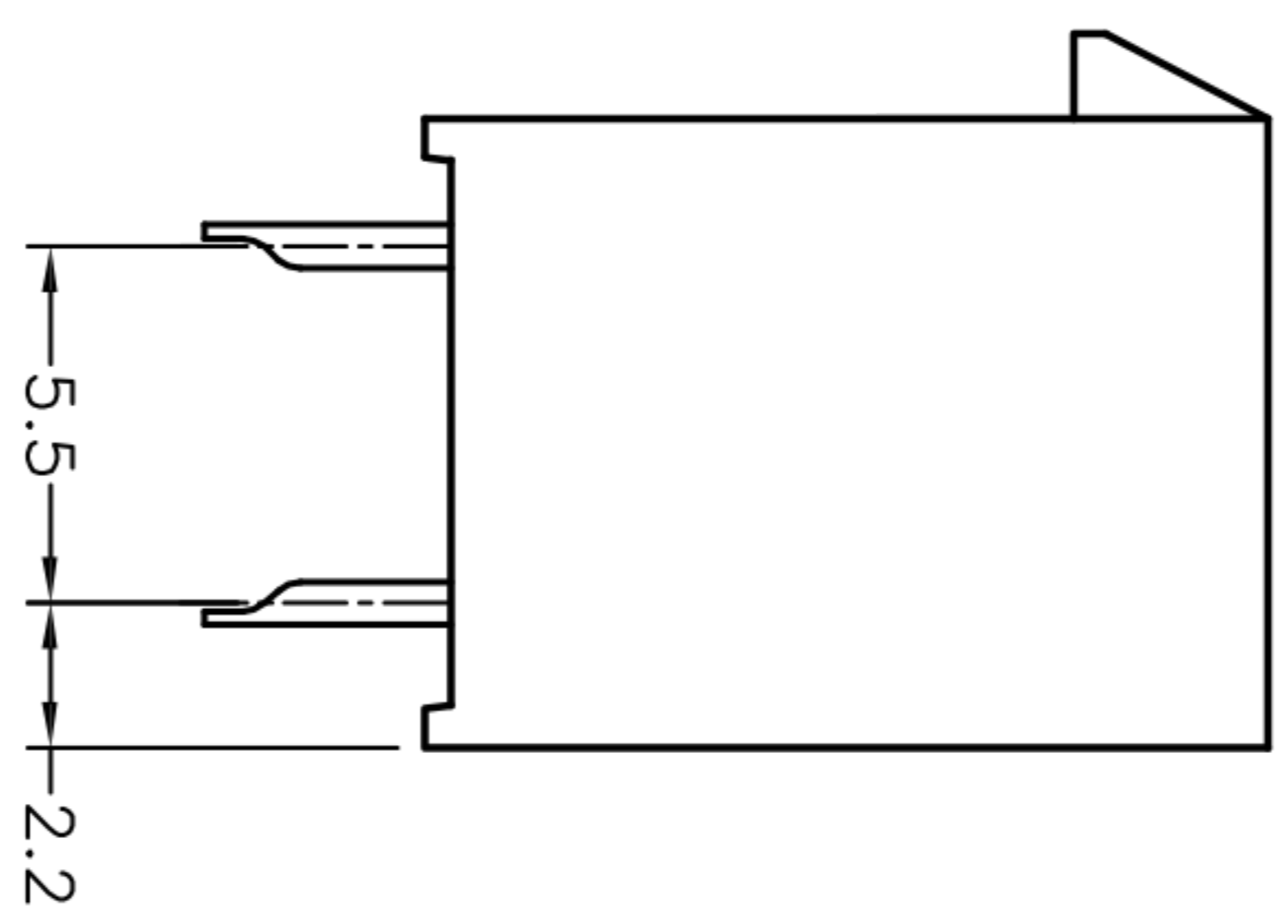
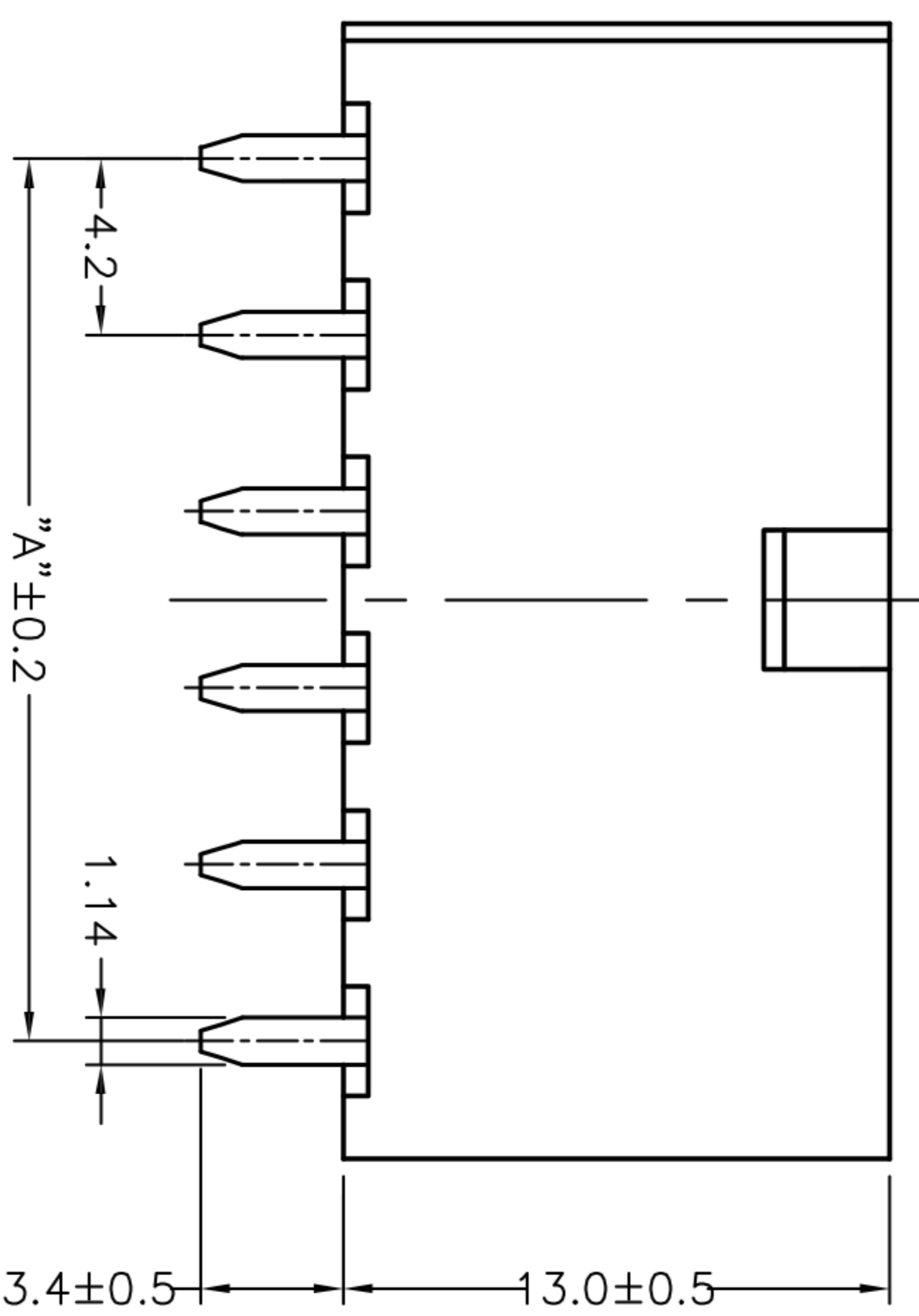
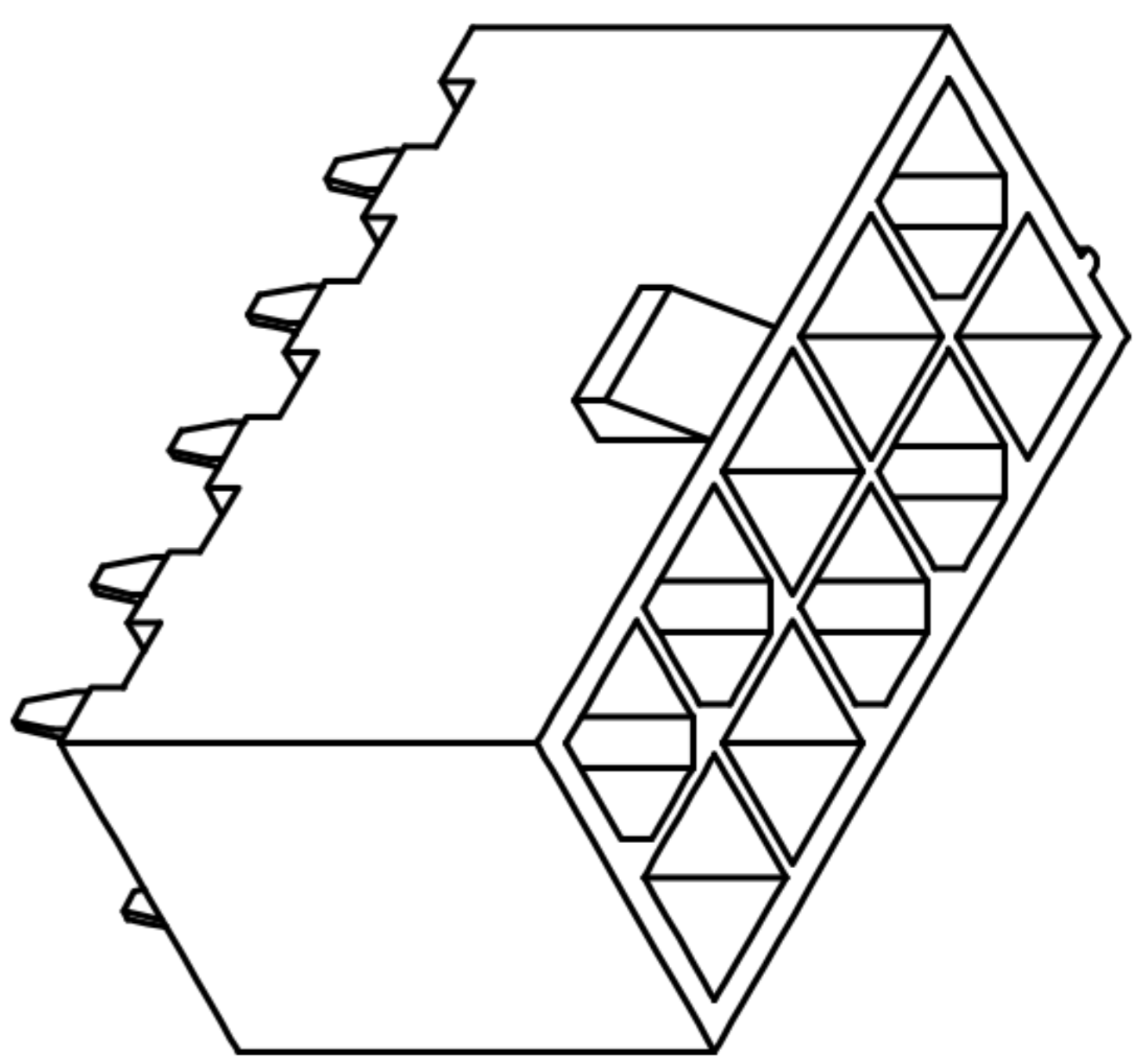
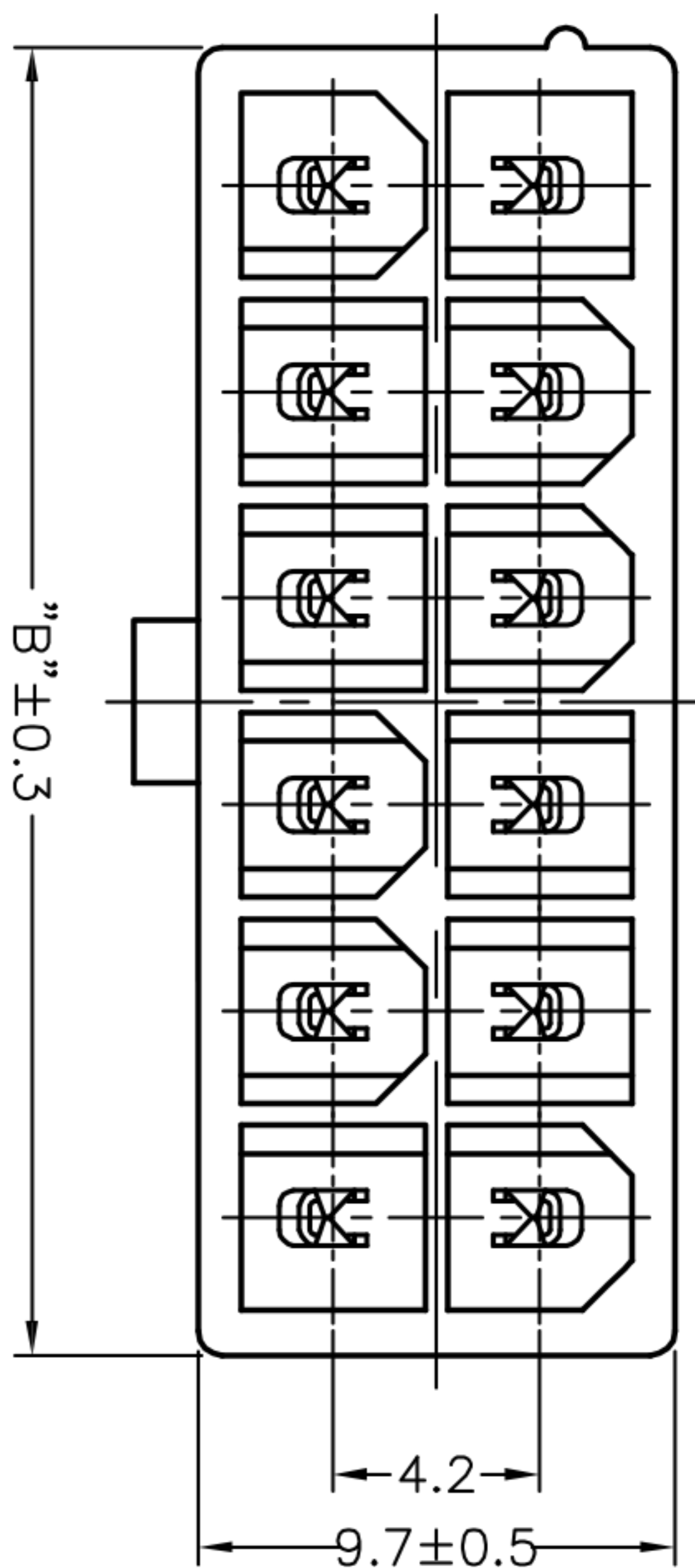


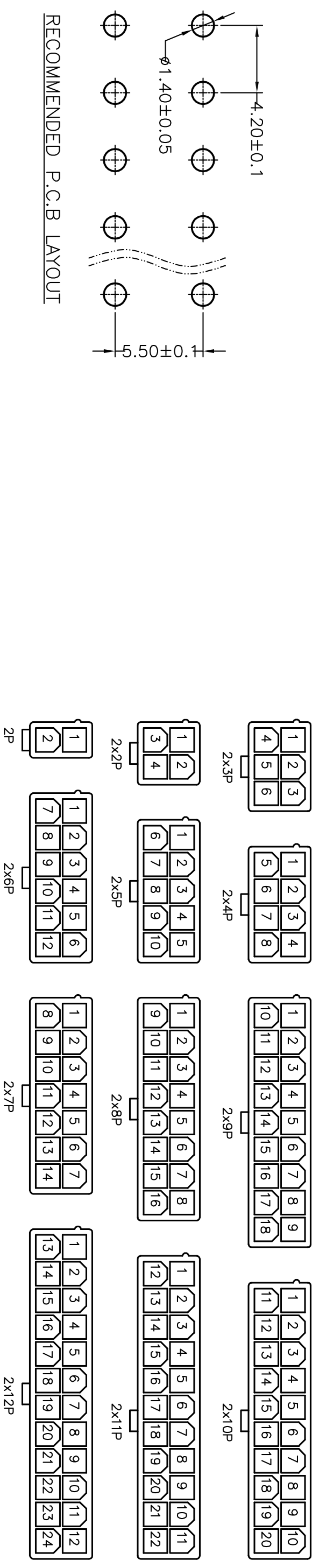
Poles	DIM.A	DIM.B
2x1P	-	5.6
2x2P	4.2	9.8
2x3P	8.4	14.0
2x4P	12.6	18.2
2x5P	16.8	22.4
2x6P	21.0	26.6
2x7P	25.2	30.8
2x8P	29.4	35.0
2x9P	33.6	39.2
2x10P	37.8	43.4
2x11P	42.0	47.6
2x12P	46.2	51.8



### 技术参数 SPECIFICATIONS

- ◆ 适用线规: AWG#28~#16
  - ◆ Applicable Wire: AWG#28~#16
  - ◆ 额定电压: 600V DC/AC(rms)
  - ◆ Rated voltage: 600V DC/AC(rms)
  - ◆ 额定电流: 7A (AWG #16)
  - ◆ Rated Current: 7A (AWG #16)
  - ◆ 耐压值: 1500V AC/minute
  - ◆ Withstand voltage: 1500V AC/min.
  - ◆ 工作温度: -40°C ~ +105°C
  - ◆ Working Temp : -40°C ~ +105°C
  - ◆ 绝缘电阻: ≥1000 MΩ
  - ◆ Insulation resistance: ≥1000 MΩ
  - ◆ 接触电阻: ≤10 mΩ
  - ◆ Contact resistance: ≤10 mΩ
- 材料 MATERIAL**  
 ◆ 绝缘体: 尼龙66, UL94-V2  
 Insulator: PA66, UL94-V2  
 ◆ 接触针: 黄铜  
 Contact PIN: Brass

### CIRCUIT SIZE LAYOUT



ECN NO.	REV.	DATE.	DESCRIPTION.	CHANGE.	CHECK.	APPRO.
	A		NEW			
<b>APPROVALS</b>						
DRAWN		ZHIWEI.CHEN	DATE		2015.07.07	
CHECKED			TITLE:			
APPROVALS			PART NO.		GP01-4250WV-2xNP-K	
TOLERANCES ARE		30 <sup>以上</sup> ±0.30	ANGLE		±2°	
		10~30 ±0.20	UNIT: mm		SCALE: 1:1	
		5~10 ±0.15	DRAWING NO.			
		~ 5 ±0.10	PROJ.		SHEET 1 OF 1	

